

Double Acting With Tilt Saddle Cylinders

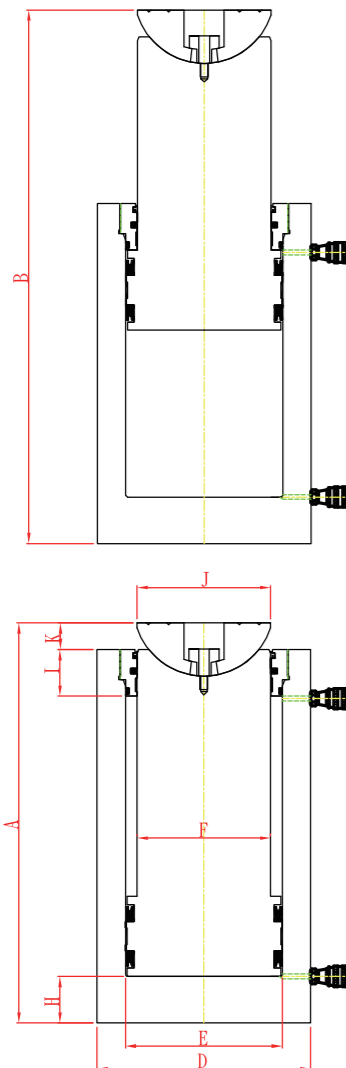


Capacity:
50-1,500 Tons

Stroke:
50-500 mm

Max. Operating Pressure:
700bar/10,000psi

DCT Series



| Model No. | Capacity | Stroke | Piston Area | Oil Volume |
|------------|----------|--------|-----------------|-----------------|
| | Ton/Kn | mm | cm ² | cm ³ |
| DCT-502 | 50 | 50 | 78.54 | 392.7 |
| DCT-506 | | 150 | 78.54 | 1178.1 |
| DCT-5012 | | 300 | 78.54 | 2356.2 |
| DCT-5020 | | 500 | 78.54 | 3927 |
| DCT-1002 | 100 | 50 | 143.14 | 715.7 |
| DCT-1006 | | 150 | 143.14 | 2147 |
| DCT-10012 | | 300 | 143.14 | 4294.2 |
| DCT-10020 | | 500 | 143.14 | 7157 |
| DCT-1502 | 150 | 50 | 213.82 | 1069 |
| DCT-1506 | | 150 | 213.82 | 3207 |
| DCT-15012 | | 300 | 213.82 | 6414 |
| DCT-15020 | | 500 | 213.82 | 10691 |
| DCT-2002 | 200 | 50 | 283.53 | 1417 |
| DCT-2006 | | 150 | 283.53 | 4253 |
| DCT-20012 | | 300 | 283.53 | 8505 |
| DCT-20020 | | 500 | 283.53 | 14176 |
| DCT-2502 | 250 | 50 | 363.05 | 1815 |
| DCT-2506 | | 150 | 363.05 | 5445 |
| DCT-25012 | | 300 | 363.05 | 10891 |
| DCT-25020 | | 500 | 363.05 | 18152 |
| DCT-3002 | 300 | 50 | 433.73 | 2168 |
| DCT-3006 | | 150 | 433.73 | 6506 |
| DCT-30012 | | 300 | 433.73 | 13012 |
| DCT-30020 | | 500 | 433.73 | 21686 |
| DCT-4002 | 400 | 50 | 572.55 | 2862 |
| DCT-4006 | | 150 | 572.55 | 8588 |
| DCT-40012 | | 300 | 572.55 | 17176 |
| DCT-40020 | | 500 | 572.55 | 28627 |
| DCT-5002 | 500 | 50 | 730.6 | 3653 |
| DCT-5006 | | 150 | 730.6 | 10959 |
| DCT-50012 | | 300 | 730.6 | 21918 |
| DCT-50020 | | 500 | 730.6 | 36530 |
| DCT-6002 | 600 | 50 | 865.7 | 4328 |
| DCT-6006 | | 150 | 865.7 | 12985 |
| DCT-60012 | | 300 | 865.7 | 25971 |
| DCT-60020 | | 500 | 865.7 | 43285 |
| DCT-8002 | 800 | 50 | 1164.16 | 5820 |
| DCT-8006 | | 150 | 1164.16 | 17462 |
| DCT-80012 | | 300 | 1164.16 | 34924 |
| DCT-80020 | | 500 | 1164.16 | 58208 |
| DCT-10002 | 1000 | 50 | 1452.2 | 7261 |
| DCT-10006 | | 150 | 1452.2 | 21783 |
| DCT-100012 | | 300 | 1452.2 | 43566 |
| DCT-100020 | | 500 | 1452.2 | 72610 |
| DCT-12002 | 1200 | 50 | 1735 | 8674 |
| DCT-12006 | | 150 | 1735 | 26024 |
| DCT-120012 | | 300 | 1735 | 52048 |
| DCT-120020 | | 500 | 1735 | 86747 |
| DCT-15002 | 1500 | 50 | 2206.2 | 11031 |
| DCT-15006 | | 150 | 2206.2 | 33092 |
| DCT-150012 | | 300 | 2206.2 | 66185 |
| DCT-150020 | | 500 | 2206.2 | 110309 |

Double Acting With Tilt Saddle Cylinders

- DCT Series high tonnage double acting hydraulic cylinders are designed specifically for heavy lifting up to 1,500 tons
- Double-acting, for positive retraction
- Integral stop ring provides piston blow-out protection
- Interchangeable, hardened grooved tilt saddles are standard
- Built-in safety valve prevents accidental over-pressurization.
- Plunger wiper reduces contamination, extending cylinder life
- Special synthetic coating on external surface and plated chrome pistons provide superior corrosion resistance
- C8F coupler and dustcap included on all models
- Customized capacity and strokes available

| Collapsed Height | Extended Height | Cylinder Dia. | Bore Dia. | Plunger Dia. | Port Height | Stop Ring Height | Saddle Dia. | Clearance Between Saddle And Stop Ring | Weight | Model No. |
|------------------|-----------------|---------------|-----------|--------------|-------------|------------------|-------------|--|--------|------------|
| A | B | D | E | F | H | I | J | K | kgs | |
| mm | mm | mm | mm | mm | mm | mm | mm | mm | | |
| 200 | 250 | 135 | 100 | 75 | 30 | 50 | 85 | 35 | 18 | DCT-502 |
| 300 | 450 | 135 | 100 | 75 | 30 | 50 | 85 | 35 | 28 | DCT-506 |
| 485 | 785 | 135 | 100 | 75 | 30 | 50 | 85 | 35 | 44 | DCT-5012 |
| 742 | 1242 | 135 | 100 | 75 | 50 | 50 | 85 | 35 | 67 | DCT-5020 |
| 210 | 260 | 185 | 135 | 110 | 40 | 50 | 125 | 35 | 40 | DCT-1002 |
| 315 | 465 | 185 | 135 | 110 | 40 | 50 | 125 | 35 | 57 | DCT-1006 |
| 505 | 805 | 185 | 135 | 110 | 40 | 50 | 125 | 35 | 92 | DCT-10012 |
| 775 | 1275 | 185 | 135 | 110 | 60 | 50 | 125 | 35 | 141 | DCT-10020 |
| 235 | 285 | 220 | 165 | 135 | 50 | 60 | 145 | 35 | 62 | DCT-1502 |
| 340 | 490 | 220 | 165 | 135 | 50 | 60 | 145 | 35 | 88 | DCT-1506 |
| 550 | 850 | 220 | 165 | 135 | 50 | 60 | 145 | 35 | 142 | DCT-15012 |
| 785 | 1285 | 220 | 165 | 135 | 70 | 60 | 145 | 35 | 231 | DCT-15020 |
| 240 | 290 | 255 | 190 | 160 | 55 | 60 | 165 | 40 | 84 | DCT-2002 |
| 345 | 495 | 255 | 190 | 160 | 55 | 60 | 165 | 40 | 119 | DCT-2006 |
| 560 | 860 | 255 | 190 | 160 | 55 | 60 | 165 | 40 | 196 | DCT-20012 |
| 800 | 1300 | 255 | 190 | 160 | 75 | 60 | 165 | 40 | 280 | DCT-20020 |
| 255 | 305 | 290 | 215 | 180 | 65 | 65 | 180 | 40 | 116 | DCT-2502 |
| 355 | 505 | 290 | 215 | 180 | 65 | 65 | 180 | 40 | 159 | DCT-2506 |
| 565 | 865 | 290 | 215 | 180 | 65 | 65 | 180 | 40 | 255 | DCT-25012 |
| 865 | 1365 | 290 | 215 | 180 | 85 | 65 | 180 | 40 | 416 | DCT-25020 |
| 275 | 325 | 320 | 235 | 200 | 70 | 70 | 200 | 40 | 153 | DCT-3002 |
| 410 | 560 | 320 | 235 | 200 | 70 | 70 | 200 | 40 | 230 | DCT-3006 |
| 600 | 900 | 320 | 235 | 200 | 70 | 70 | 200 | 40 | 336 | DCT-30012 |
| 960 | 1460 | 320 | 235 | 200 | 90 | 70 | 200 | 40 | 545 | DCT-30020 |
| 305 | 355 | 370 | 270 | 225 | 80 | 80 | 225 | 45 | 219 | DCT-4002 |
| 425 | 575 | 370 | 270 | 225 | 80 | 80 | 225 | 45 | 290 | DCT-4006 |
| 650 | 950 | 370 | 270 | 225 | 80 | 80 | 225 | 45 | 433 | DCT-40012 |
| 975 | 1475 | 370 | 270 | 225 | 80 | 80 | 225 | 45 | 646 | DCT-40020 |
| 347 | 397 | 410 | 305 | 255 | 95 | 90 | 255 | 50 | 321 | DCT-5002 |
| 447 | 597 | 410 | 305 | 255 | 95 | 90 | 255 | 50 | 407 | DCT-5006 |
| 702 | 1002 | 410 | 305 | 255 | 95 | 90 | 255 | 50 | 646 | DCT-50012 |
| 997 | 1497 | 410 | 305 | 255 | 95 | 90 | 255 | 50 | 918 | DCT-50020 |
| 370 | 420 | 450 | 332 | 280 | 100 | 100 | 280 | 55 | 414 | DCT-6002 |
| 470 | 620 | 450 | 332 | 280 | 100 | 100 | 280 | 55 | 520 | DCT-6006 |
| 710 | 1010 | 450 | 332 | 280 | 100 | 100 | 280 | 55 | 790 | DCT-60012 |
| 1005 | 1505 | 450 | 332 | 280 | 100 | 100 | 280 | 55 | 1121 | DCT-60020 |
| 410 | 460 | 520 | 385 | 320 | 115 | 110 | 320 | 65 | 599 | DCT-8002 |
| 510 | 660 | 520 | 385 | 320 | 115 | 110 | 320 | 65 | 738 | DCT-8006 |
| 740 | 1040 | 520 | 385 | 320 | 115 | 110 | 320 | 65 | 1080 | DCT-80012 |
| 1035 | 1535 | 520 | 385 | 320 | 115 | 110 | 320 | 65 | 1520 | DCT-80020 |
| 460 | 510 | 580 | 430 | 360 | 130 | 125 | 360 | 75 | 848 | DCT-10002 |
| 560 | 710 | 580 | 430 | 360 | 130 | 125 | 360 | 75 | 1022 | DCT-10006 |
| 760 | 1060 | 580 | 430 | 360 | 130 | 125 | 360 | 75 | 1387 | DCT-100012 |
| 1065 | 1565 | 580 | 430 | 360 | 130 | 125 | 360 | 75 | 1952 | DCT-100020 |
| 505 | 555 | 640 | 470 | 390 | 145 | 130 | 390 | 85 | 1137 | DCT-12002 |
| 605 | 755 | 640 | 470 | 390 | 145 | 130 | 390 | 85 | 1348 | DCT-12006 |
| 805 | 1105 | 640 | 470 | 390 | 145 | 130 | 390 | 85 | 1791 | DCT-120012 |
| 1115 | 1615 | 640 | 470 | 390 | 145 | 130 | 390 | 85 | 2491 | DCT-120020 |
| 555 | 605 | 720 | 530 | 430 | 160 | 140 | 430 | 95 | 1571 | DCT-15002 |
| 655 | 805 | 720 | 530 | 430 | 160 | 140 | 430 | 95 | 1832 | DCT-15006 |
| 835 | 1135 | 720 | 530 | 430 | 160 | 140 | 430 | 95 | 2320 | DCT-150012 |
| 1145 | 1645 | 720 | 530 | 430 | 160 | 140 | 430 | 95 | 3195 | DCT-150020 |