

# Electric & Hybrid Boom Lifts

## EASIER ACCESS, GREATER PRODUCTIVITY.

Spend less time positioning and more time working with faster function speeds with the E450 Series. With the fastest boom in its class and multi-function operations, you can get more work done both indoors and outdoors.

### Key Features



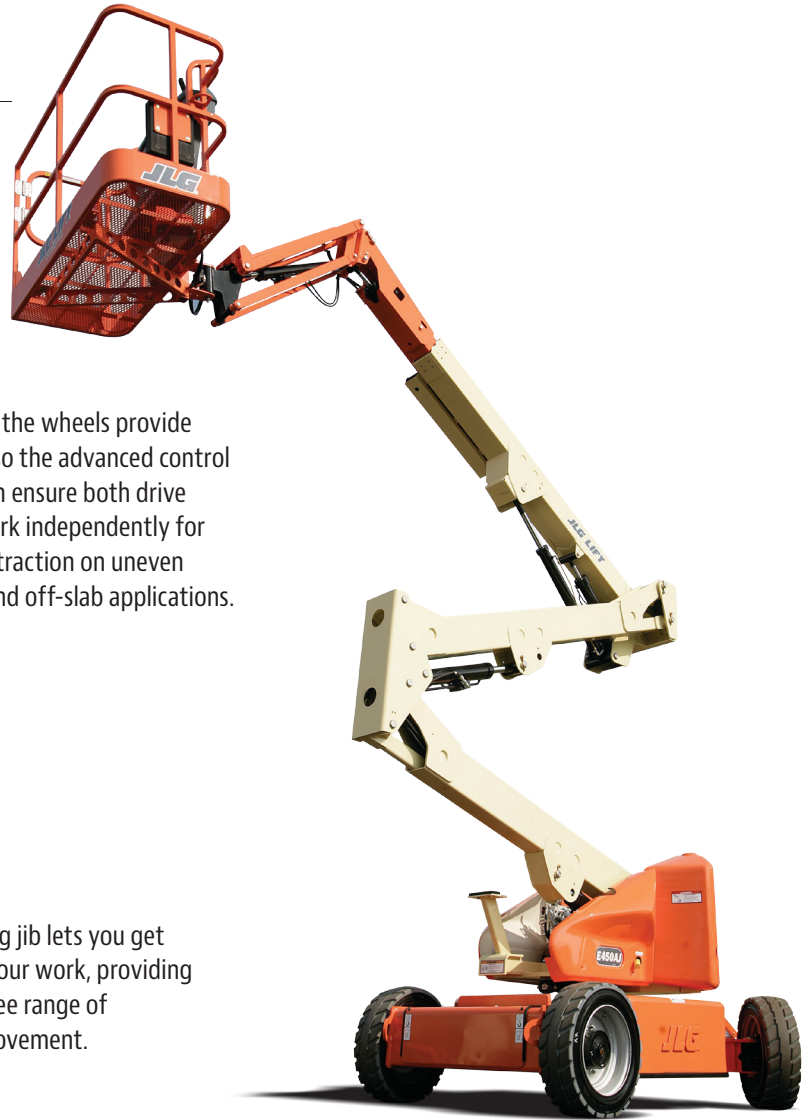
Sensors at the wheels provide feedback so the advanced control system can ensure both drive wheels work independently for improved traction on uneven surfaces and off-slab applications.



Articulating jib lets you get closer to your work, providing a 141-degree range of vertical movement.



The multi-power QuikCharge GenSet Automatic Charging system automatically charges batteries for continuous machine operation and optimum productivity.



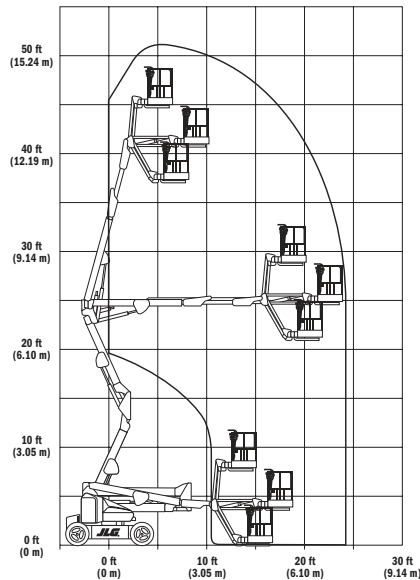
# E450 Series Specifications

E450AJ	
Platform Height	13.72 m
Horizontal Outreach	7.24 m
Up and Over Height	7.7 m
Swing	360° Non-Continuous
Platform Capacity	227 kg
Platform Rotator	180° Hydraulic
Jib (Range of Articulation)	141° (+86, -55) Vertical
A. Platform Size	0.76 x 1.52 m
B. Overall Width	1.75 m
C. Tailswing	Zero
D. Stowed Height	2.01 m
E. Stowed Length	6.45 m
F. Wheelbase	2.01 m
G. Ground Clearance	22 cm
Weight*	6,532 kg
Ground Bearing Pressure***	7.6 kg/cm <sup>2</sup>
Drive Speed	7.2 km/h
Gradeability	30%
Turning Radius (Inside)	61 cm
Turning Radius (Outside)	3.15 m
Tire Size/Type	240/55 x 17.5 Foam-Filled
Electrical System	48V DC
Batteries	8 x 6V, 370 amp-hr
Drive Motors	Dual Electric Traction AC
Brakes	Spring Applied Multiple Discs
Hydraulic Motor/Pump	Perm. Magnet Motor/Gear Pump
Hydraulic Reservoir	15.14 L

\*Certain options or country standards increase weight.  
 \*\*\*Ground bearing pressure applies to standard tires.  
 Specifications may change to meet country standards or with addition of optional equipment.

## Reach Diagrams

E450AJ



## Dimensions

