

1100 SERIES

TELESCOPIC BOOM LIFTS



Performance

	1100SJ	1030S
Platform Height	33.5m	31.6m
Horizontal Outreach	18.4m	18.4m
Platform Size	0.76 × 2.3m	0.76 × 2.3m
Stowed Length	15.3m	13.8m
Machine Width		
Axle Retracted	2.6m	2.6m
Axle Extended	3.5m	3.5m
Stowed Height	3m	3m
Load Capacity	250kg	330kg
Platform Rotation	180°	180°
Jib Length	1.83m	0
Swing	360° Continuous	360° Continuous
Driving Speed 4WD	4.8 km/h	4.8 km/h
Gradeability 2WD	30%	30%
Gradeability 4WD	45%	45%
Max Ground Bearing Pressure	10.5kg/cm ²	10.5kg/cm ²
Tail Swing	1.49m	1.49m
Turning Radius(Inside)	3.1m	3.1m
Turning Radius(Outside)	7.5m	7.5m
Tire	Foam Filled 385/65-22.5	Foam Filled 385/65-22.5
Engine	Deutz TD2011/TD2.9	Deutz TD2011/TD2.9
Engine Power	55/50 KW	55/50 KW
Fuel Tank Capacity	237L	237L
Oil Tank Capacity	200L	200L
Auxillary Power	12V DC	12V DC
Weight	18,189kg	17,780kg

Note: Certain options or country standards will increase weight.

Standard Features

- Platform: 30 x 89.5 in (0.76 x 2.27 m)
- 6 feet (1.83 m) Jib (1100SJ only)
- Covered Powertrack
- Drive-out Extendible Axles
- 180° Hydraulic Platform Rotator
- 237L (62.6 GAL) Steel Tank
- Pre-Fuel Filter
- 5 Degree Tilt Alarm/Indicator Light
- Swing-Out Engine Tray
- 12V DC Auxiliary Power
- Hourmeter
- Control ADE® System
- All Motion Alarm
- Proportional Controls
- Gull-Wing Steel Hoods
- 385/65 Foam Filled Tire
- Platform Console Machine Status Light Panel*
- Engine Distress Warning/Shutdown—Selectable via JLG Analyzer
- Skyguard System

* Provides indicator lights at platform control console for system distress, fuel level, low fuel, 5 degree tilt light and foot switch status.



Accessories & Options

- Platform: 36 x 60 in (0.91 x 1.6 m)
- 12.00-20/8.0 Solid Tire
- AC Receptacle in the Platform
- OverHead Soft Touch System
- Flashing Amber Beacon
- Platform Worklights
- Chassis Worklights
- 1/2 in Airline
- Hostile Environment Kit

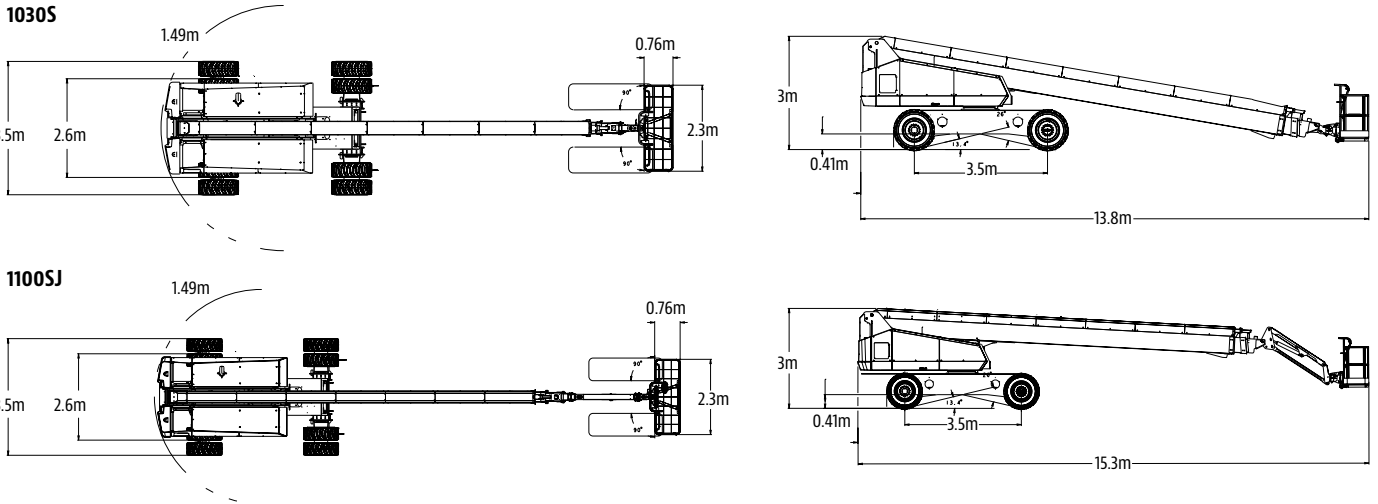
1100 SERIES

TELESCOPIC BOOM LIFTS

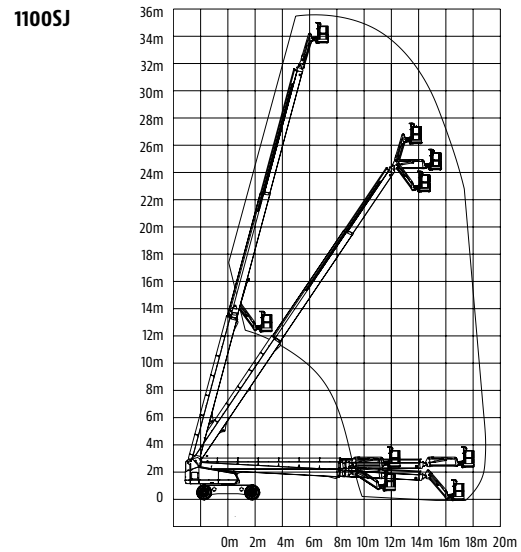
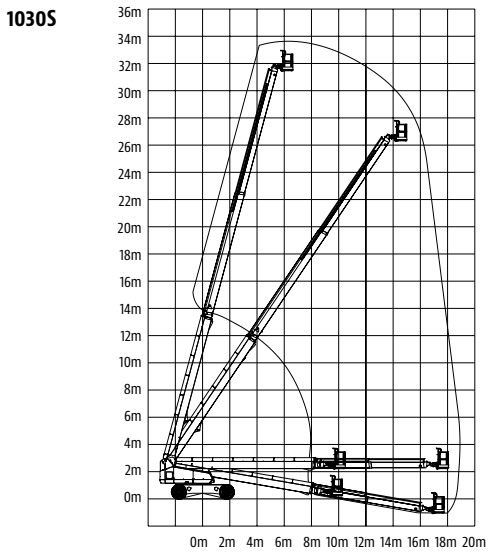


Dimensions

All dimensions are approximate.



Reach Diagram



The JLG "1 & 5" Warranty

JLG Industries, Inc. backs its products with its exclusive "1 & 5" Warranty. We provide coverage on all products for one (1) full year, and cover all specified major structural components for five (5) years. Due to continuous product improvements, we reserve the right to make specification and/or equipment changes without prior notification. This machine meets or exceeds applicable OSHA Regulations in 29 CFR 1910.67, 29 CFR 1926.453, ANSI A92.5-2006, and CSA Standard CAN3-B354.2-M82, as originally manufactured for intended applications.



JLG Wechat Account

Printed in China
02.2017

JLG Industries, Inc.
1 JLG Drive
McConnellsburg, PA 17233-9533
Telephone 717-485-5161
Toll-free in US 877-JLG-LIFT
Fax 717-485-6417
www.jlg.com

An Oshkosh Corporation Company



Oshkosh-JLG (Tianjin) Equipment Technology Co., Ltd. Shanghai Branch
No. 465, Xiao Nan Road, Fengxian District
Shanghai 201401, China
DID: 800 819 0050
400 613 0050 (Mobile)
www.jlg-cn.com