

8010H

TELEHANDLER



Performance

Rated Capacity	7,600 kg	16,755 lb
Maximum Lift Height	9.65 m	31 ft. 8 in.
Load at Max Height	4,491 kg	9,900 lb
Maximum Forward Reach	5.66 m	18 ft 7 in.
Load at Max Reach	2,495 kg	5,500 lb
Frame Leveling	8 degrees	
Lift Speed (boom retracted)		
Up	14.1 sec	
Down	10.9 sec	
Boom Speed		
Extended	13.2 sec	
Retracted	10.9 sec	
Top Travel Speed	32 kph	20 mph
Drawbar Pull (loaded)	102 kN	23,000 lb
Outside Turning Radius	4.01 m	13 ft 2 in.
Operating Weight	14,127 kg	31,145 lb

Standard Specifications

Engine

Make and Model	Deutz TCD 3.6L	
No. of Cylinders	4	
Displacement	3.6 L	220 cu in.
Gross Basic Power	100 kW	134 hp
Maximum Torque @ 2200 rpm	500 Nm	369 lb-ft
Fuel Tank Capacity	148 L	39 gal.

Transmission

Hydrostatic 2-speed

Axles

Trunnion mounted planetary 45 degree steer axles.

Integral steer cylinder.

High bias limited slip differential on front axle.

Brakes

Service brakes are inboard wet disc brake on front and rear axles and include inching.

Parking brakes are wet disc spring applied hydraulic release on front axle.

Tires

Standard	17.5-25 SGG
Optional	Foam-Filled

Cab

- Certified ROPS/FOPS structure
- Horn
- Tilt & auxiliary hydraulics on joystick
- Adjustable seat
- Single joystick controls
- Anti-theft
- Enclosed cab
- Tilt steering column
- Retractable sunscreen

Steering 4-Wheel

Hydraulic power steering

Operator selectable 4-wheel circle, 4-wheel crab, 2-wheel front

Instruments

- Volt meter
- Hourmeter
- Engine oil pressure gauge
- Temperature gauge
- Fuel gauge
- DEF gauge

Hydraulic System-Implement

Capacity	292 L	77 gal.
----------	-------	---------

Load sense piston pump. Auxiliary hydraulics used for all attachments equipped with cylinders or other hydraulic components.

Accessories & Options

- Auxiliary Electrics
- Hydraulic Coupler
- Road Lights
- Fenders
- Air Conditioning
- Brick Guards
- Work Lights
- Rotating Beacon
- Roof Wiper
- Reversing Fan
- Ride Control
- Reverse Sensing System
- Boom Brushes
- Dual Auxiliary Hydraulics
- Arctic Package
- Secondary Steering
- Boom Float
- Multi-Function Display with Reversing Camera
- White Noise Back-up Alarm
- Multiple Seat Options
- SmartLoad Technology

Attachments

Standard Carriage	1.5 m	60 in.
	1.8 m	72 in.
	2.2 m	87 in.
Dual Fork Positioning Carriage	1.8 m	72 in.
Side-Shift Carriage with Dual Fork Positioning	1.8 m	72 in.
General Purpose Bucket	2.38 m, 1.98 m ³	94 in., 2.6 cu yd
Light Material Bucket	2.38 m, 3.97 m ³	94 in., 5.2 cu yd
Multipurpose 4-in-1 Bucket	2.38 m, 0.99 m ³	94 in., 1.3 cu yd
Multipurpose 4-in-1 Bucket	2.38 m, 1.98 m ³	94 in., 2.6 cu yd
Grapple Bucket	2.38 m, 1.29 m ³	94 in., 1.7 cu yd
	2.38 m, 1.98 m ³	94 in., 2.6 cu yd
Material Handling Arm	7,598 kg	16,750 lb Capacity
Hook, Coupler Mounted	7,598 kg	16,750 lb Capacity
Winch, Coupler Mounted	3,629 kg	8,000 lb Capacity
Bale Cradle, Round Bale	3,175 kg	7,000 lb Capacity
Bale Clamp, Square Bale	4,536 kg	10,000 lb Capacity
Pipe Grapple	2.4 m, 3,629 kg	96 in., 8,000 lb Capacity
Log Handler	2.03 m, 3,629 kg	80 in., 8,000 lb Capacity
Steel Coil Handler	7,598 kg	16,750 lb Capacity

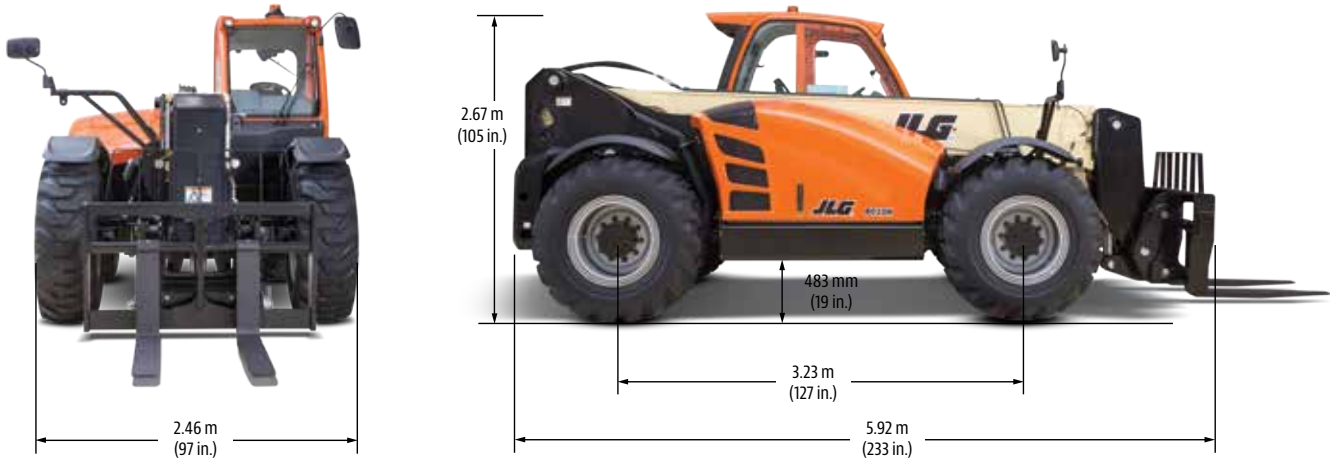
8010H

TELEHANDLER

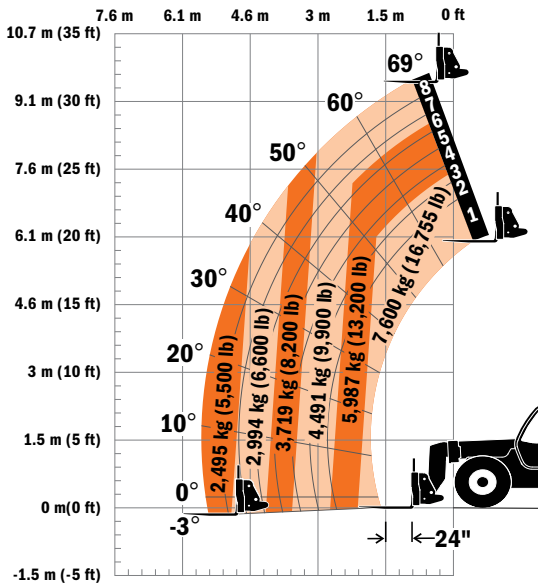


Dimensions

All dimensions are approximate.



Load Chart



The JLG "1 & 5" Warranty

JLG Industries, Inc. backs its products with its exclusive "1 & 5" Warranty. We provide coverage on all products for one (1) full year, and cover all specified major structural components for five (5) years. Due to continuous product improvements, we reserve the right to make specification and/or equipment changes without prior notification. This machine meets or exceeds applicable OSHA Regulations in 29 CFR 1910.67, 29 CFR 1926.453, ANSI A92.5-2006, and CSA Standard CAN3-B354.2-M82, as originally manufactured for intended applications.

Part No.: 3132248
Printed in USA



JLG Industries, Inc.
1 JLG Drive
McConnellsburg, PA 17233-9533
Telephone 717-485-5161
Toll-free in US 877-JLG-LIFT
Fax 717-485-6417
www.jlg.com

An Oshkosh Corporation Company