



MODEL: NSCS-SERIES

Capacity: 10 - 100 Ton

Stroke: 38 - 62 mm

Max. Working Pressure: 700 bar / 10,000 psi

- All cylinders are single acting with spring return.
- Pistons hard chromed.
- Cylinders inside roll-polished.
- Cylinders outside blasted with black nitriding finish.



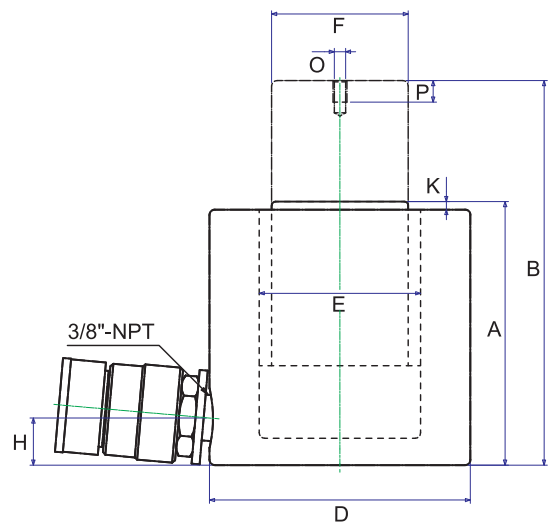
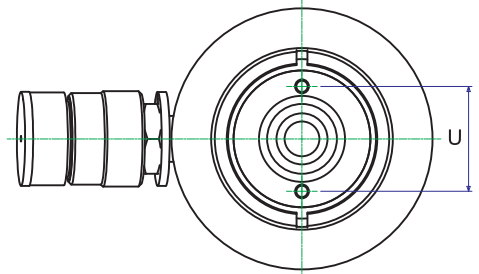
Hand / Foot Pumps

Page 19-30



High Pressure Accessories

Page 73-79



NSCS-SERIES, COMPACT CYLINDERS

| Model | Capacity (ton) | Stroke (mm) | Oil Cap (cm ³) | A | | C | D | E | F | H | K | V | G | O | P | U | L | M | Weight (kgs) |
|----------|----------------|-------------|----------------------------|------------|----------|---|-----|------|------|------|-----|---|---|----|----|----|---|---|--------------|
| | | | | HEIGHT(mm) | | | | | | | | | | | | | | | |
| | | | | RETRACTED | EXTENDED | | | | | | | | | | | | | | |
| NSCS101 | 10 | 38 | 55.0 | 88 | 126 | — | 78 | 42.8 | 38 | 17.5 | 5 | — | — | M4 | 8 | 26 | — | — | 4.1 |
| NSCS201 | 20 | 45 | 127.0 | 98 | 143 | — | 97 | 60 | 50.8 | 17.5 | 3 | — | — | M5 | 9 | 39 | — | — | 5 |
| NSCS302 | 30 | 62 | 274.0 | 117 | 179 | — | 107 | 75 | 63.5 | 19 | 3 | — | — | M5 | 8 | 39 | — | — | 6.8 |
| NSCS502 | 50 | 60.5 | 429.0 | 127 | 187.5 | — | 127 | 95 | 70 | 19 | 2 | — | — | M5 | 8 | 39 | — | — | 10.9 |
| NSCS1002 | 100 | 58 | 830.0 | 146.5 | 204.5 | — | 165 | 135 | 92 | 25 | 1.5 | — | — | M8 | 10 | 55 | — | — | 22.7 |