

Stackable Double Acting Lock Nut Cylinders



Capacity:
100-1,000 Tons

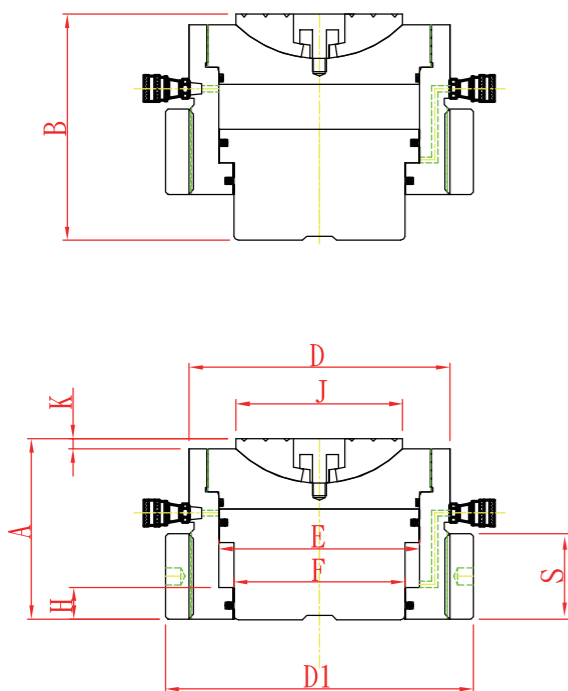
Stroke:
50,100 mm

Max. Operating Pressure:
700bar/10,000psi

SDL Series

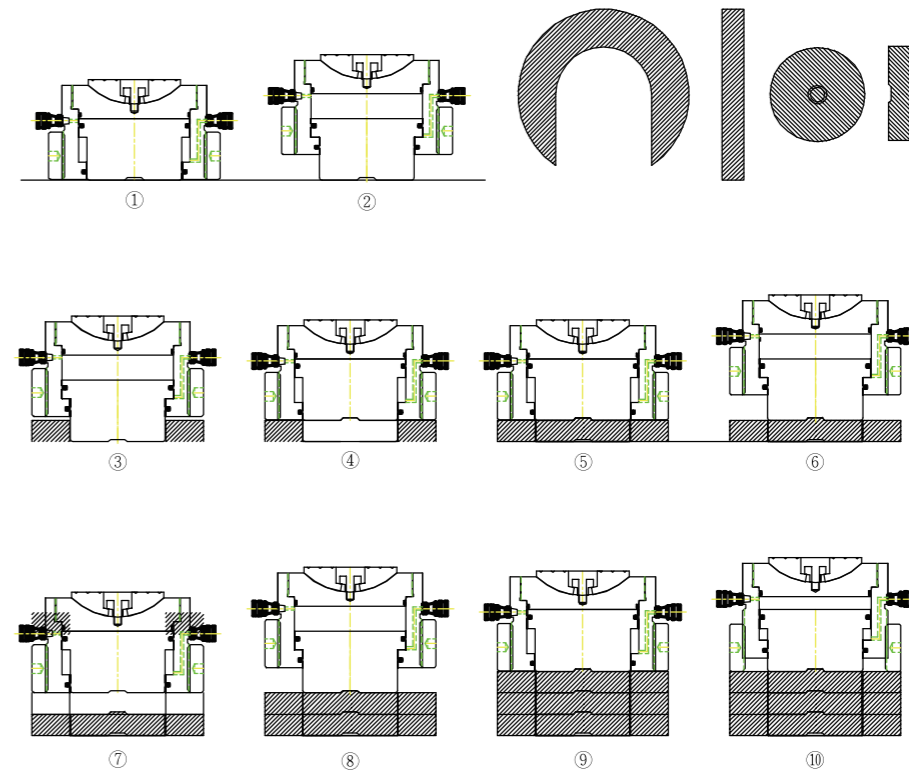


- SDL Series high tonnage safety lock nut cylinders for mechanical load holding for up to 1,000 tons
- Double-acting, for positive retraction
- Integral stop ring provides piston blow-out protection
- Baked enamel outside finish and chrome plated pistons provide superior corrosion protection
- C8F coupler and dustcap included on all models
- Customized capacity and strokes available



Model No.	Capacity	Stroke	Piston Area	Oil Volume
	Ton/Kn	mm	cm ²	cm ³
SDL-1002	100	50	143.14	716
SDL-1004		100	143.14	1431
SDL-1502	150	50	213.82	1069
SDL-1504		100	213.82	2138
SDL-2002	200	50	283.53	1418
SDL-2004		100	283.53	2835
SDL-2502	250	50	363.05	1815
SDL-2504		100	363.05	3631
SDL-3002	300	50	433.77	2169
SDL-3004		100	433.77	4337
SDL-4002	400	50	572.56	2863
SDL-4004		100	572.56	5726
SDL-5002	500	50	730.62	3653
SDL-5004		100	730.62	7306
SDL-6002	600	50	866	4328
SDL-6004		100	866	8657
SDL-8002	800	50	1146.16	5821
SDL-8004		100	1146.16	11462
SDL-10002	1000	50	1452.2	7261
SDL-10004		100	1452.2	14522

Stackable Double Acting Lock Nut Cylinders



Collapsed Height	Extended Height	Cylinder Dia.	Lock Nut Dia.	Locking Thread Dia.	Plunger Spec.	Saddle Dia.	Clearance Between Saddle And Stop Ring	Lock Nut Thickness	Weight	Model No.
A	B	D	D1	E	F	J	K	S	kgs	
188	238	185	225	135	120	115	10	90	46	SDL-1002
238	338	185	225	135	120	115	10	140	60	SDL-1004
190	240	220	260	165	140	135	10	90	63	SDL-1502
240	340	220	260	165	140	135	10	140	81	SDL-1504
197	247	250	295	190	160	155	12	90	83	SDL-2002
247	347	250	295	190	160	155	12	140	107	SDL-2004
200	250	280	330	215	180	175	12	95	106	SDL-2502
250	350	280	330	215	180	175	12	145	136	SDL-2504
212	262	305	360	235	200	195	12	100	135	SDL-3002
262	362	305	360	235	200	195	12	150	170	SDL-3004
238	283	350	420	270	225	215	15	100	199	SDL-4002
283	383	350	420	270	225	215	15	150	243	SDL-4004
238	288	390	460	305	250	240	15	110	245	SDL-5002
288	388	390	460	305	250	240	15	160	300	SDL-5004
245	295	420	500	332	270	260	15	115	296	SDL-6002
295	395	420	500	332	270	260	15	165	362	SDL-6004
280	330	490	580	385	320	310	20	125	455	SDL-8002
330	430	490	580	385	320	310	20	175	545	SDL-8004
305	355	540	650	430	350	340	30	130	600	SDL-10002
355	455	540	650	430	350	340	30	180	712	SDL-10004

Stackable Double Acting Lock Nut Cylinders