



## MODEL:ALNC-SERIES

Capacity: 20 - 100 Ton

Stroke: 50 - 250 mm

Spring Return, Lock Nut Type

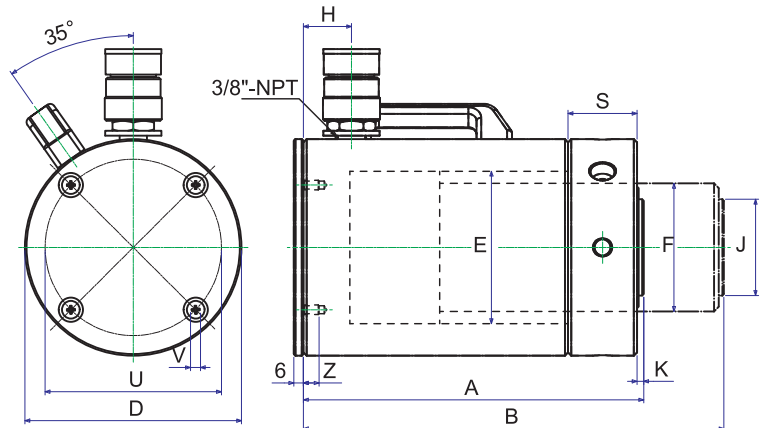
Max. Working Pressure: 700 bar / 10,000 psi



## FEATURES

- Half weight of the steel cylinders.
- Locknut extend load holding period safely.
- Large saddle surface for side load protection.
- Carrying handles are equipped with all models.
- Hard-Anodized coating reduces wear & corrosion.
- Stop rings for piston blow-out protection.
- Heavy duty spring for fast and full retraction.

Model No./ Capacity (ton)	Bolt Circle U (mm)	Thread V (mm)	Thread Depth Z (mm)
ALNC-20	70	M6×1.0	10
ALNC-30	80	M6×1.0	10
ALNC-50	110	M6×1.0	10
ALNC-100	160	M6×1.0	10



## SPECIFICATIONS

Model No.	Capacity (ton)	Stroke (mm)	Cylinder Effective Area (cm <sup>2</sup> )	Oil Capacity (cm <sup>3</sup> )	Collapsed Height A (mm)	Extended Height B (mm)	Outside Diameter D (mm)	Cylinder Bore Diam E (mm)	Plunger Diameter (threaded) F (mm)	Base to Advance Port H (mm)	Saddle Diameter J (mm)	Saddle Protrusion from Plunger K (mm)	Lock Nut Height S (mm)	Weight (kgs)
ALNC202	20	50	30.2	151	193	243	92	62	Tr55×3	25	40	3	25	4.8
ALNC204		100	30.2	302	243	343	92	62	Tr55×3	25	40	3	25	5.7
ALNC206		150	30.2	453	293	443	92	62	Tr55×3	25	40	3	25	6.3
ALNC208		200	30.2	604	343	543	92	62	Tr55×3	25	40	3	25	6.9
ALNC302	30	50	44.2	221	205	255	110	75	Tr60×3	25	40	3	30	6.9
ALNC304		100	44.2	442	255	355	110	75	Tr60×3	25	40	3	30	7.7
ALNC306		150	44.2	662	305	455	110	75	Tr60×3	25	40	3	30	8.6
ALNC308		200	44.2	883	355	555	110	75	Tr60×3	25	40	3	30	9.6
ALNC502	50	50	70.8	354	212	262	135	95	Tr80×4	30	60	3	43	9.3
ALNC504		100	70.8	708	262	362	135	95	Tr80×4	30	60	3	43	10.7
ALNC506		150	70.8	1063	312	462	135	95	Tr80×4	30	60	3	43	14.5
ALNC508		200	70.8	1417	362	562	135	95	Tr80×4	30	60	3	43	14.5
ALNC5010		250	70.8	1771	412	662	135	95	Tr80×4	30	60	3	43	16.5
ALNC1002	100	50	143	715	235	285	200	135	Tr105×6	45	70	3	51	21.9
ALNC1004		100	143	1431	285	385	200	135	Tr105×6	45	70	3	51	25.2
ALNC1006		150	143	2146	335	485	200	135	Tr105×6	45	70	3	51	29.2
ALNC1008		200	143	2861	385	585	200	135	Tr105×6	45	70	3	51	33.0
ALNC10010		250	143	3577	435	685	200	135	Tr105×6	45	70	3	51	35.4