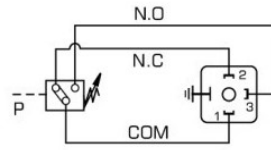


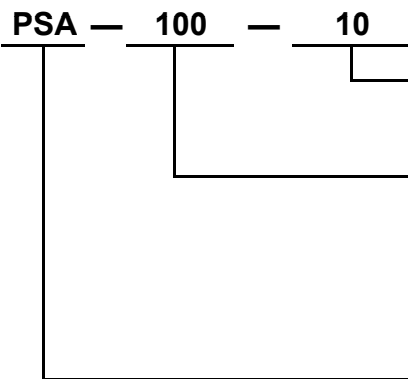


壓力開關 Pressure Switch



N.O.=Normally open
N.C.=Normally close

HOW TO ORDER:



Design No.
(Standard - Without indicator LED)

Pressure Adj. Range

030 : 4-30 kgf/cm ²	150 : 20-150 kgf/cm ²
040 : 8-40 kgf/cm ²	250 : 40-250 kgf/cm ²
070 : 10-70 kgf/cm ²	360 : 50-360 kgf/cm ²
100 : 15-100 kgf/cm ²	

Model No.
Direct Read-out, Standard type

SPECIFICATIONS:

Model	Rated Pressure (kgf/cm ²)	Pressure Adj. Range (kgf/cm ²)	Max. Pressure (kgf/cm ²)	Weight (kg)
PSA-030	14	4-30	80	1.1
PSA-040	20	8-40	150	1.1
PSA-070	30	10-70	150	1.1
PSA-100	50	15-100	250	1.1
PSA-150	70	20-150	250	1.1
PSA-250	100	40-250	400	1.1
PSA-360	200	50-360	400	1.1

DIMENSION (mm)

