



AHP703D



UHP2800

## MODEL: AHP & UHP SERIES

Dual-speed models

Large 3/8" NPT pressure port for maximum flow

Max. working pressure: 700 - 2800 bar

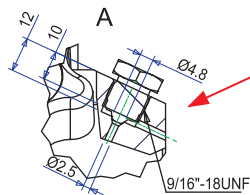
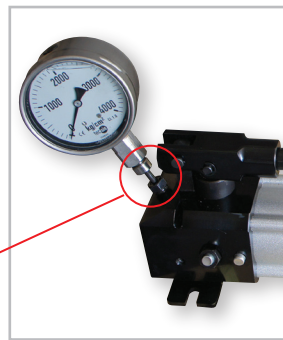


AHP705



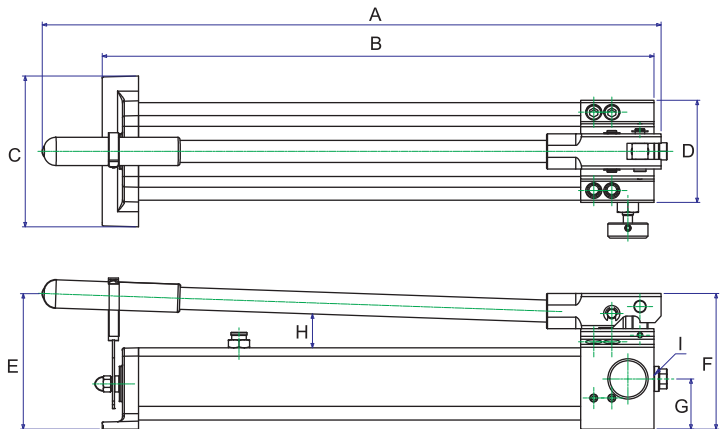
AHP701

The gauge can be mounted directly on **UHP2800JQ**, the cone thread for gauge port is 9/16"-18UNF



## FEATURES

- Rugged construction and light handle efforts.
- Aluminum Alloy construction and handy release knob with anti-losing mechanism are truly suitable to industrial requirements and your daily works.
- The light weight design is ideally for easy operation and portability.
- Double action design on **AHP703D** is ideal for double acting cylinders, no extra control valve and adapters are requested.
- **UHP2800** brings you special ultra high pressure application but with light weight.
- **UHP2800JQ** directly mounted with Pressure gauge and no extra adaptors needed. More efficient and convenient.



## SPECIFICATIONS

Model No.	Pressure Rating (bar)		Oil Capacity (c.c.)	Usable Oil Capacity (c.c.)	Oil Volume Per Stroke (c.c.)		A (mm)	B (mm)	C (mm)	D (mm)	E (mm)	F (mm)	G (mm)	H (mm)	I	Weight (kgs)
	1st stage	2nd stage			1st stage	2nd stage										
AHP701	20	700	500	350	12.9	1.65	391	361	110	77	140	127	42.5	37	3/8"-NPT	2.3
AHP702	20	700	1000	750	12.9	1.65	542	513	110	77	130	127	42.5			3.5
AHP703	20	700	2000	1620	12.9	2.30	623	556	150	102	135	135	50		3/4"-16UNF	6
<b>AHP703D</b>	20	700	2000	1620	12.9	2.30	623	556	150	102	135	135	24/37			7.0
AHP704	20	1000	1000	750	12.9	1.65	539	501	110	77	145	127	42.5	3/4"-16UNF	3.5	
AHP705	20	1500	2000	1620	12.9	1.00	699	629	150	102	152	157	50		6.7	
<b>UHP2800</b>	20	2800	1000	700	12.9	0.65	620	488	79.5	140	157	156.5	26	G 1/4"	6.7	
<b>UHP2800JQ</b>	20	2800	1000	700	12.9	0.65	617	568	79.5	140	157	156.5	93		6.7	