



MODEL:ACHC-SERIES

Capacity: 20 - 60 Tons

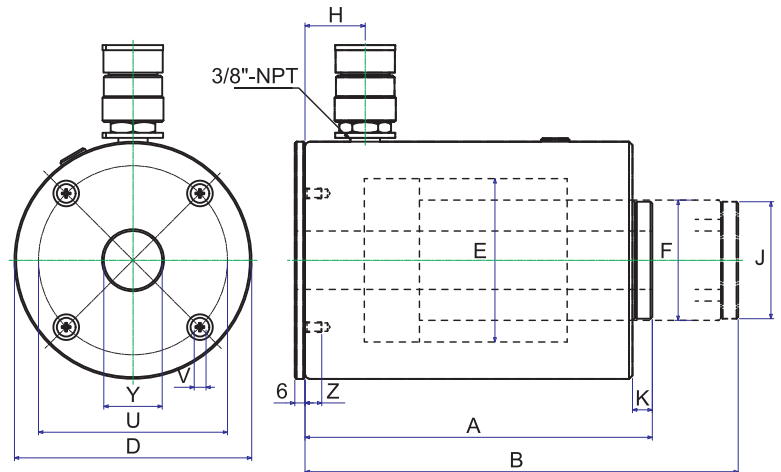
Stroke: 50 - 150 mm

Spring Return, Hollow Type

Max. Working Pressure: 700 bar / 10,000 psi

FEATURES

- Half weight of the steel cylinders.
- Heavy duty spring for fast & full retraction.
- Chrome plated center hole for extra protection.
- Carrying handles are equipped with all models.
- Hard-Anodized coating reduces wear & corrosion.
- Stop rings for piston blow-out protection.
- Rod wiper protects inner rod from dirt.



Base Plate Mounting Holes Dimensions(mm)

Model No./ Capacity (ton)	Bolt Circle U (mm)	Thread V (mm)	Thread Depth Z (mm)
ACHC-20	80	M6×1.0	10
ACHC-30	110	M6×1.0	10
ACHC-60	160	M6×1.0	10

SPECIFICATIONS

Model No.	Cylinder Capacity (ton)	Stroke (mm)	Cylinder Effective Area (cm ²)	Oil Capacity (cm ³)	Collapsed Height A (mm)	Extended Height B (mm)	Outside Diameter D (mm)	Cylinder Bore Diam E (mm)	Plunger Diameter F (mm)	Base to Advance Port H (mm)	Saddle Diameter J (mm)	Saddle Protrusion from Plunger K (mm)	Center Hole Dia. Y (mm)	Weight (kg)
ACHC202	20	50	34	170	175	225	110	75	55	30	54	8	27	4.3
ACHC204		100		340	245	345	110	75	55	30	54	8	27	6.5
ACHC206		150		510	315	465	110	75	55	30	54	8	27	8.0
ACHC302	30	50	55	275	202	252	138	95	70	35	68	11.5	34	8.4
ACHC304		100		550	264.5	364.5	138	95	70	35	68	11.5	34	11.8
ACHC306		150		825	327	477	138	95	70	35	68	11.5	34	12.8
ACHC602	60	50	89.5	448	250	300	200	125	100	50	89	14	54	23.0
ACHC604		100		895	300	400	200	125	100	50	89	14	54	26.3
ACHC606		150		1342	350	500	200	125	100	50	89	14	54	27.0