

# X26J PLUS

COMPACT CRAWLERS

**JLG**  
reachingout®

## MORE ECONOMIC

- Minimal emissions and noise pollution.

## MORE PRODUCTIVE

- Reduce your set-up time with auto-levelling outriggers.  
Unrestricted 230kgs basket capacity.

## MORE ACCESS

- Equipped with track drive for easy manoeuvrability in sensitive environments.

## SMART DESIGN

- Low weight for ease of transportation and operation in weight restricted areas.



## Standard Features

- 0.69 x 1.34 m Aluminium 2 person platform
- Slide bar rear entry
- Footswitch
- Full proportional control
- Articulating jib
- Powered platform rotator (124°)
- Remote Control (via cable to platform)
- Full Remote Control of drive and stabilization
- Multi-lingual LCD display on platform console
- Platform console position sensor and lock
- Envelope management load sensing system
- Platform designed for ease of removal/changeover
- AC Cable to platform
- 6.5mm air line to platform

## Standard Specifications

- Diesel Engine, Kubota D902 16,1 Kw (21.6cv)
- Electric Engine, 230V, 50 Hz - 2.2 kW
- 2.1 m x 0.23 m x 0.38 m
- High Profile Non-Marking Rubber Tracks
- Non Mark Outrigger Pads
- Cylinder Rod Protection on Outriggers
- Automatic cut-out when out of level
- Powered track extensions/retraction
- 360° non-continuous turntable rotation
- Turntable alignment sensor and gauge
- Three emergency descent systems
- Electro-hydraulic controls
- Full pressure hydraulic controls
- 2nd (high) Drive speed
- Lifting/Tie down points

## Accessories & Options

- 100A/hr 83V Lithium ion power pack
- Basket for 1 person
- 2.1 m x 0.23 m x 0.38 m
- High Profile Black Rubber Tracks

Note: Some options may increase lead time, and some option combinations may not be available.

# X26J PLUS

COMPACT CRAWLERS



## Performance

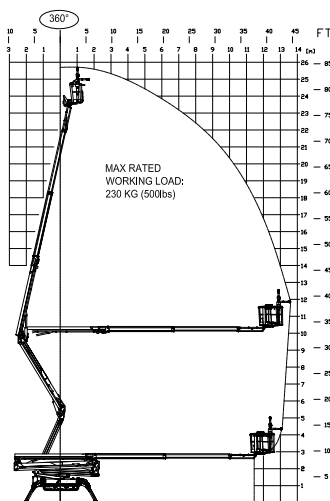
- Working Height 25.7 m
- Working Outreach 13.75 m
- Up & Over Height 10.1 m
- Swing (non continuous) 360°
- Jib - overall length 1.68 m
- Jib - range of articulation: (+/-) 89° (+0/-89°)
- Platform size (standard 2 persons) 0.69 m x 1.34 m
- Platform size (narrow one person) 0.78 m x 0.61 m
- Stowed width (with std. 2P platform) 1.48 m
- Dimensions:
  - A. Stowed width (without platform) 0.99 m
  - B. Stowed height (on tracks) 1.98 m
  - C. Stowed length (on tracks) 6.34 m
  - D. Outrigger footprint
    - D1. Wide 4.1 m x 3.9 m
    - D2. Narrow 5.4 m x 2.5 m
- Machine weight (with standard platform)<sup>1/2</sup> 4,365 kg
- Gradeability 28%
- Maximum operating slope 16°
- Max. Approach / Depart angles 22°
- Track size high profile non marking rubber 2.1 m x 0.23 m x 0.38 m
- Width of Undercarriage (Retracted/Extended) 0.99 m / 1.49 m
- AC electric motor 2.2 KW 50Hz 230V
- Engine Kubota D902 16,1 Kw (21.6cv)



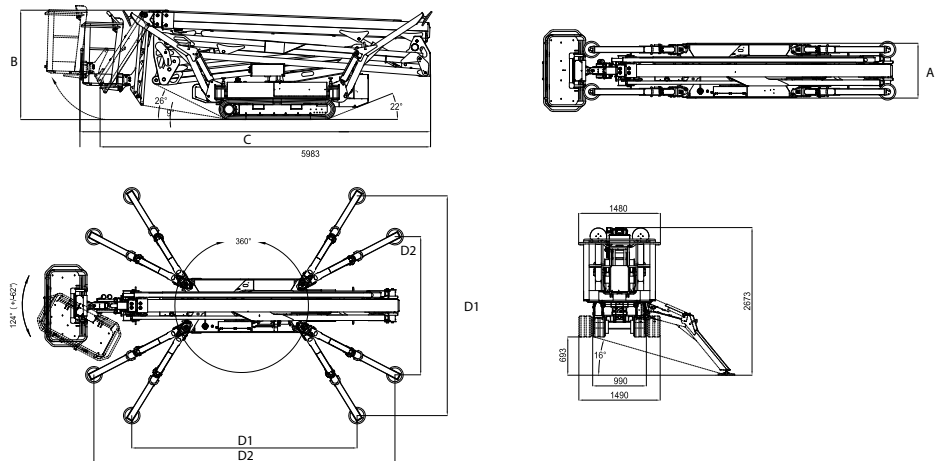
<sup>1</sup> Machine weight (with standard platform)Lithium - Ion: 4384 kg

<sup>2</sup> Certain options or country standards may increase weight and/or dimensions.

## Reach Diagram



## Dimensions



REV:03/2014  
DIMENSIONS REPORTED IN THIS DRAWING ARE NOMINAL. THE REAL VALUE OF EACH DIMENSION CAN BE INFLUENCED BY TOLERANCES IN THE MANUFACTURE OF THE COMPONENTS, PLAY IN THE CONNECTIONS, ELASTIC DEFORMATION DUE TO THE EFFECTS OF FORCES.

## IMPORTANT

JLG is continually researching and developing products and reserves the right to make modifications without prior notice. All data in this document is indicative. Certain options or country standards will increase weight. Specifications may change to meet country standards or with the addition of optional equipment.

Due to continuous product improvements, JLG Industries reserves the right to make specification and/or equipment changes without prior notification.



**South East Asia Office**  
**Oshkosh-JLG (S) Technology**  
**Equipment Pte Ltd.**  
 35 Tuas Avenue 2, Singapore 639464  
 Phone: +65 6591 9044  
 Fax: +65 6591 9045  
[www.jlg.com](http://www.jlg.com)

**Oshkosh-JLG (Tianjin) Equipment**  
**Technology Co., Ltd. Shanghai Branch**  
 No. 465, Xiao Nan Road, Fengxian District  
 Shanghai 201401, China  
 DID: 800 819 0050  
 400 613 0050 (Mobile)  
[www.jlg-cn.com](http://www.jlg-cn.com)

An Oshkosh Corporation Company