

Electric & Hybrid Boom Lifts

ROUND-THE-CLOCK PERFORMANCE.

The E400 Series is environmentally friendly with industry-leading performance. You get the up and over access you need and multiple function operation for efficient maneuvering in tight spaces.

Key Features

Indoor/Outdoor Versatility

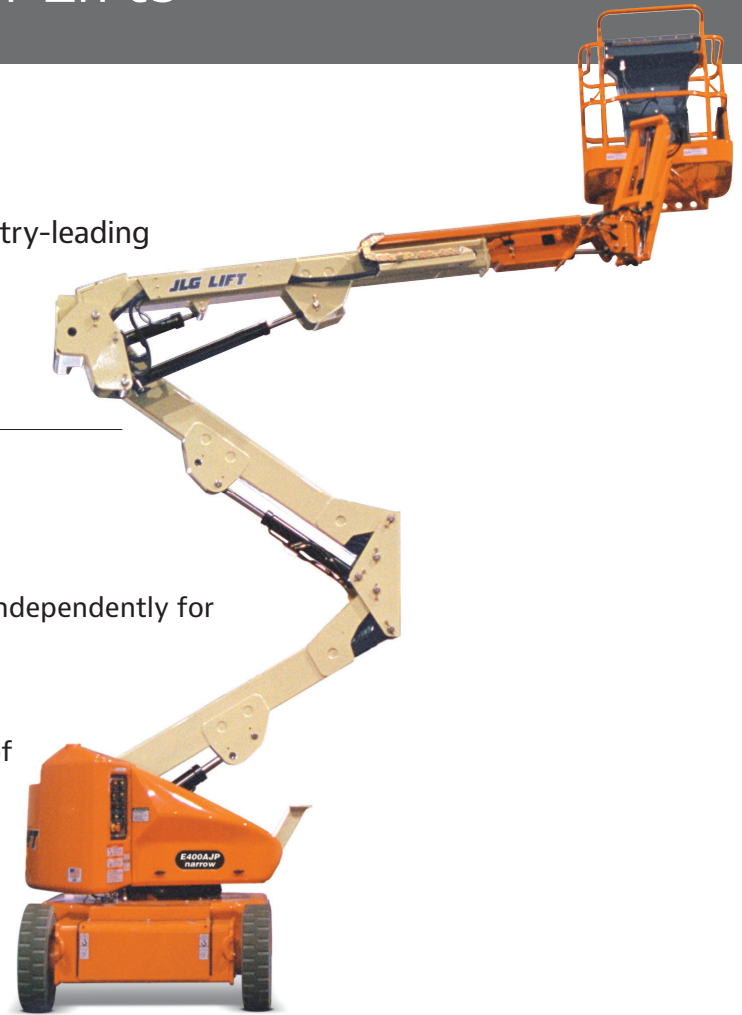
With automatic traction control, both drive wheels work independently for improved traction on uneven surfaces.

Up and Over Access

The exclusive JibPLUS® boom option provides 180° range of side-to-side movement.

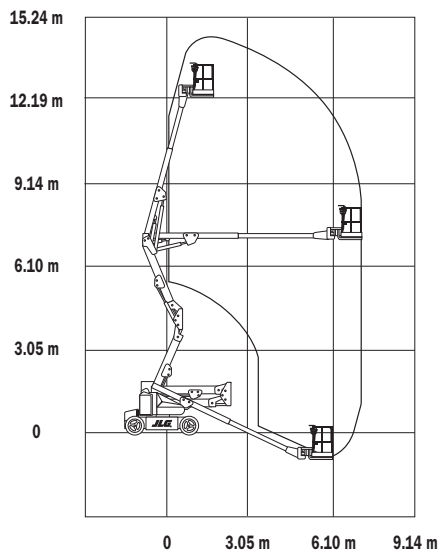
Access Confined Areas

Narrow models feature a compact chassis of only 1.5 m wide for easier access to confined work areas.

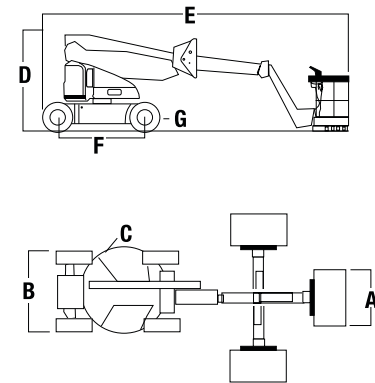
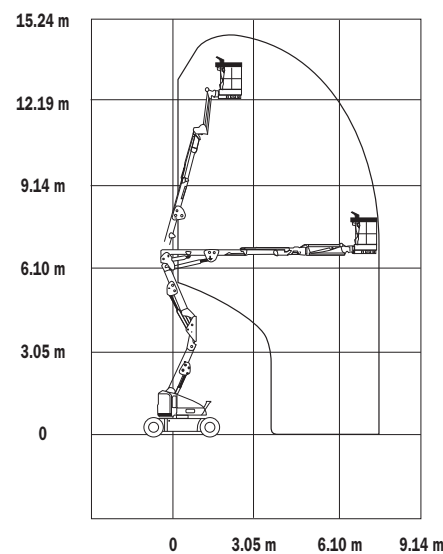


Reach Diagrams and Dimensions

E400A Narrow



E400AJP Narrow



E400 Series Specifications

	E400A Narrow	E400AJP Narrow
Platform Height	12.19 m	12.19 m
Horizontal Outreach	6.45 m	6.83 m
Up and Over Height	6.55 m	6.55 m
Swing	360° Non-Continuous	360° Non-Continuous
Platform Capacity – Unrestricted	227 kg	227 kg
Platform Rotator	180° Hydraulic	180° Hydraulic
Jib (Range of Articulation)	—	144° (+84, -60) Vertical
(JibPLUS [®])	—	180° Horizontal
A. Platform Size	0.76 x 1.22 m	0.76 x 1.22 m
B. Overall Width	1.5 m	1.5 m
C. Tailswing	10 cm	10 cm
D. Stowed Height	1.97 m	1.97 m
E. Stowed Length	5.51 m	6.71 m
F. Wheelbase	2.01 m	2.01 m
G. Ground Clearance	13 cm	13 cm
Weight*	5,942 kg	6,759 kg
Ground Bearing Pressure**	6.6 kg/cm ²	13.0 kg/cm ²
Drive Speed 2WD	7.2 km/h	7.2 km/h
Gradeability 2WD	30%	30%
Turning Radius (Inside)	86 cm	86 cm
Turning Radius (Outside)	3.15 m	3.15 m
Tire Size/Type (Front)	22 x 6 x 17.75 Non-Marking	22 x 6 x 17.75 Non-Marking
Tire Size/Type (Rear)	25 x 7 x 12 Non-Marking	25 x 7 x 12 Non-Marking
Electrical System	48V DC	48V DC
Batteries	8 x 6V, 370 amp-hr	8 x 6V, 370 amp-hr
Drive Motors	Dual Electric Traction AC	Dual Electric Traction AC
Brakes	Spring Applied Multiple Discs	Spring Applied Multiple Discs
Hydraulic Motor/Pump	Perm. Magnet/Gear Pump	Perm. Magnet/Gear Pump
Hydraulic Reservoir	15.14 L	15.14 L

*Certain options or country standards increase weight.

**Ground bearing pressure applies to standard tires.

Specifications may change to meet country standards or with addition of optional equipment.